

BROCCOLINI

REAL ESTATE & DEVELOPMENT

OPPORTUNITY FOR BUILD TO SUIT

LEASE OR  
SALE

**123** ACRES  
COMMERCIAL AND LIGHT INDUSTRIAL USES

---

1966 ROGER STEVENS DRIVE, OTTAWA, ON





CONCEPT BUILDING

## COMMERCIAL OR INDUSTRIAL USES

This future property is located in the southwest quadrant of the Highway 416 and Roger Stevens Drive interchange in Ottawa. Providing excellent highway access and visibility, the property is suitable for commercial and light industrial uses.

Locally known as the Jordel Acres subdivision, it was designed as an industrial subdivision consisting of multiple blocks to accommodate a variety of commercial and industrial uses of rural roads.

The site covers an area of approximately 49 hectares with approximately 630 metres of facade along Roger Stevens Drive. In addition, about 830 metres of frontage runs alongside Highway 416.

**22M (72FT)**MAX PRINCIPAL  
BUILDING HEIGHTEXCELLENT HIGHWAY  
ACCESS AND VISIBILITY

## FEATURES

- SITE AREA: 123 ACRES
- MAX BUILDABLE SF: 1M SF +
- SHOVEL READY: Q2 2024
- SERVICING: DRY SERVICES, HYDRO AND GAS TO LOT LINE
- EXCELLENT HIGHWAY ACCESS AND VISIBILITY
- ZONING STATUS: LIGHT INDUSTRIAL

### EXAMPLES OF PERMITTED USES AS PER RG ZONING:

- HEAVY EQUIPMENT AND VEHICLE SALES, RENTAL AND SERVICING
- LIGHT INDUSTRIAL USES
- TRUCK TRANSPORT TERMINAL
- WAREHOUSE
- WASTE PROCESSING AND TRANSFER FACILITY (NON-PUTRESCIBLE)



DIRECT ACCESS TO  
PROVINCIAL HWY 416 AND 401

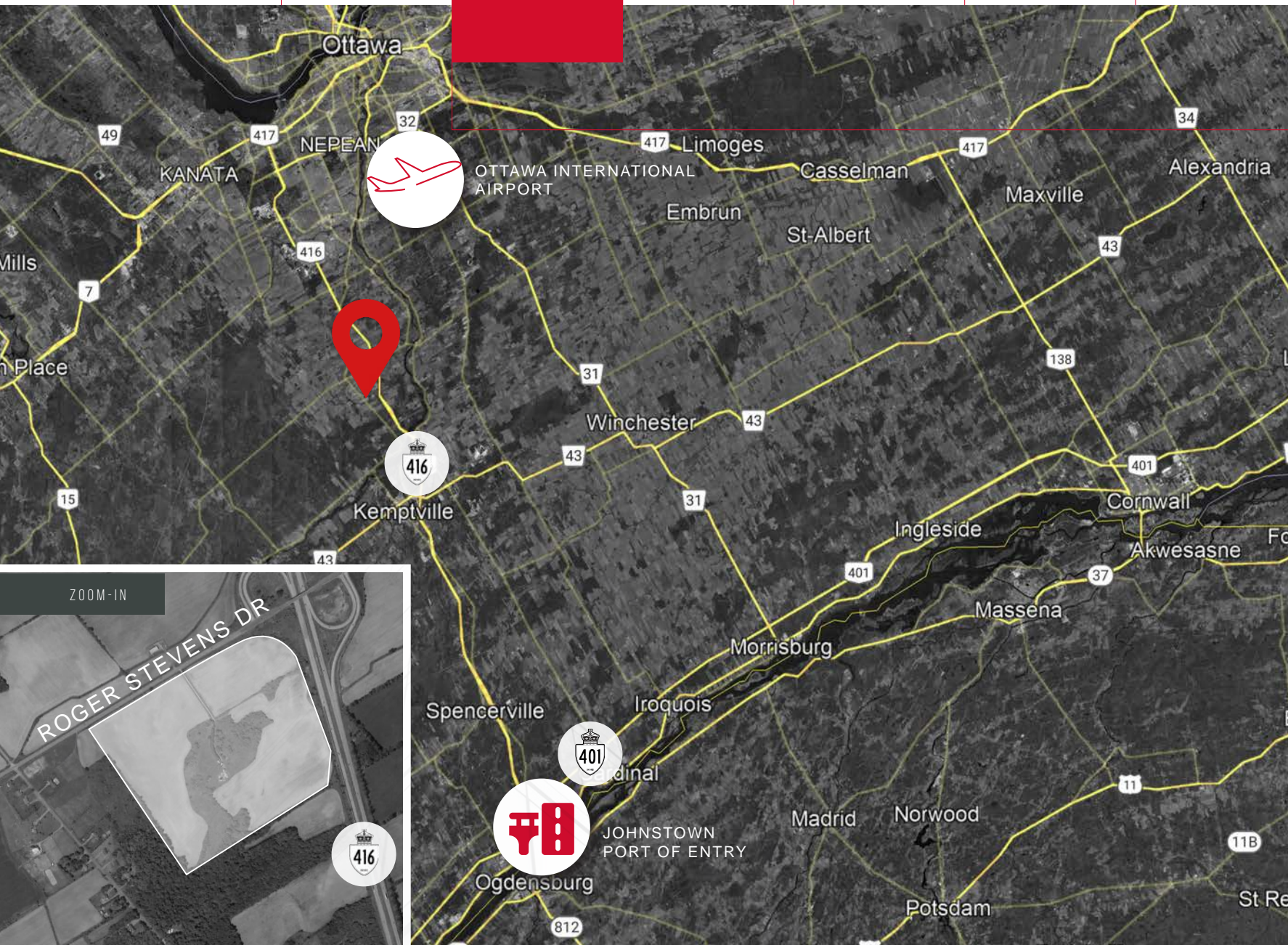
PROXIMITY TO US-CAN  
BORDER AND QUEBEC  
PROVINCE





## ACCESS

- 42KM (28MINS) FROM DOWNTOWN OTTAWA
- 29KM (27MINS) FROM OTTAWA INTERNATIONAL AIRPORT
- 50KM (30MINS) NORTH OF PROVINCIAL HIGHWAY 401
- 50KM (30MINS) FROM JOHNSTOWN PORT OF ENTRY
- 18.5KM (14MINS) FROM KEMPTVILLE ONTARIO





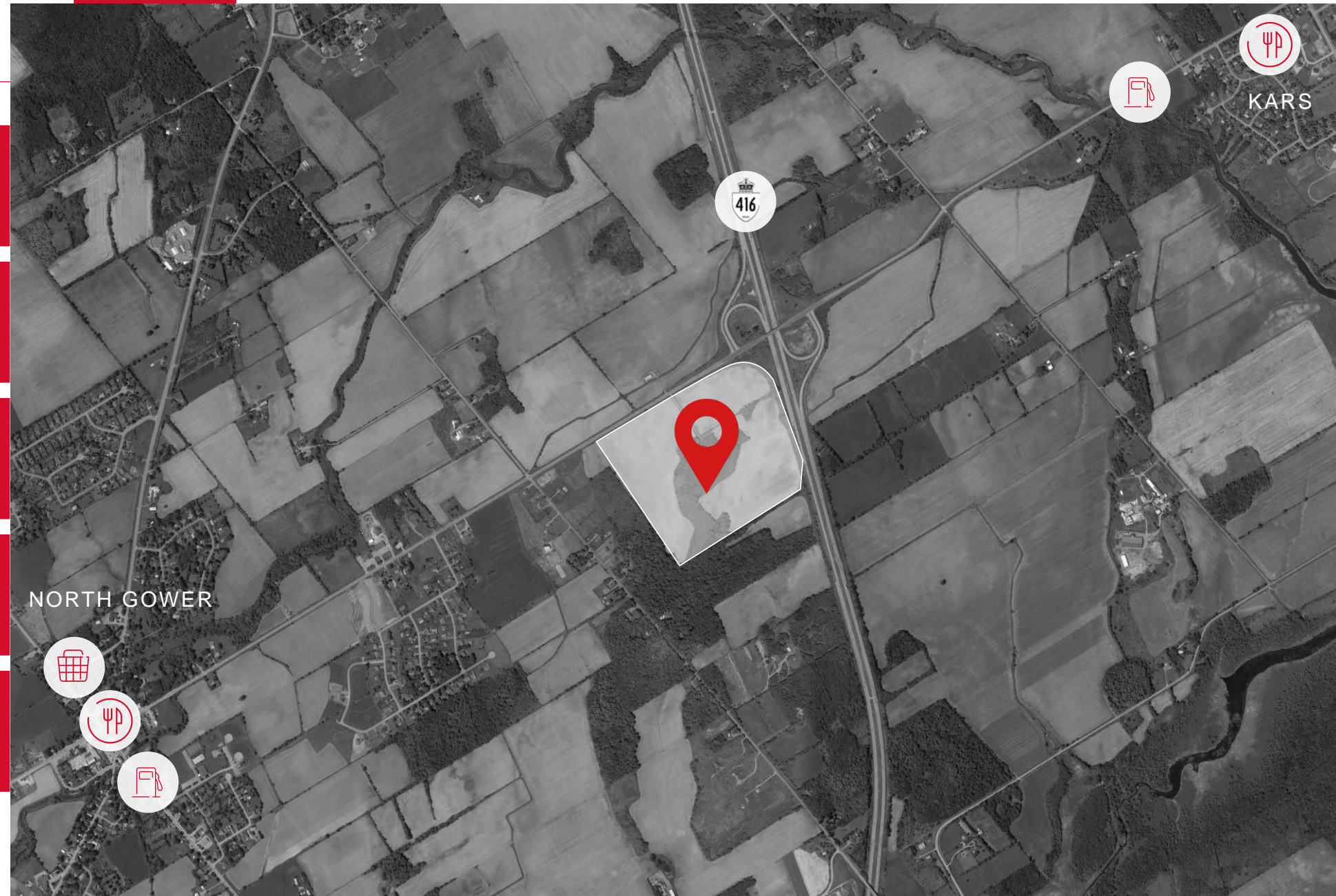
## AMENITIES

WITHIN 10-MINUTE DRIVE

RESTAURANTS / CAFE 08

RETAIL PLAZAS 02

GAS STATIONS 02



NORTH GOWER



KARS





**TONI WODZICKI**

VICE-PRESIDENT, ACQUISITIONS AND INVESTMENTS

E. TONI.WODZICKI@BROCCOLINI.COM

C. 416.579.6111

**BROCCOLINI.COM**





# BROCCOLINI

REAL ESTATE & DEVELOPMENT

[BROCCOLINI.COM](https://broccolini.com)

MONTREAL - OTTAWA - TORONTO